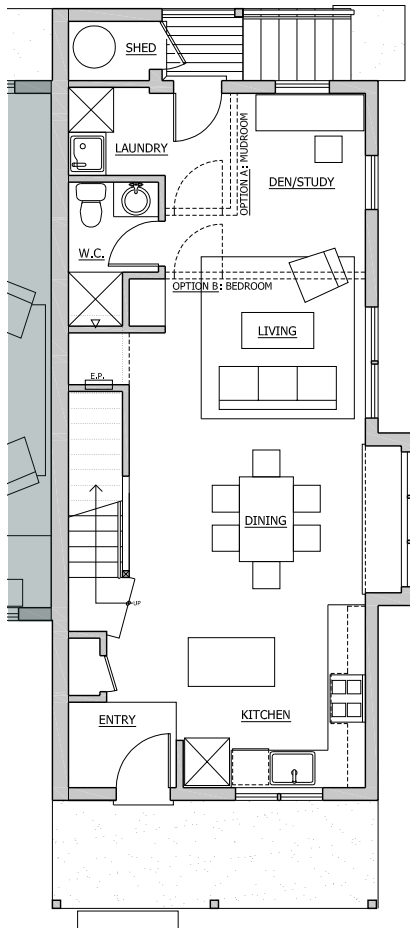
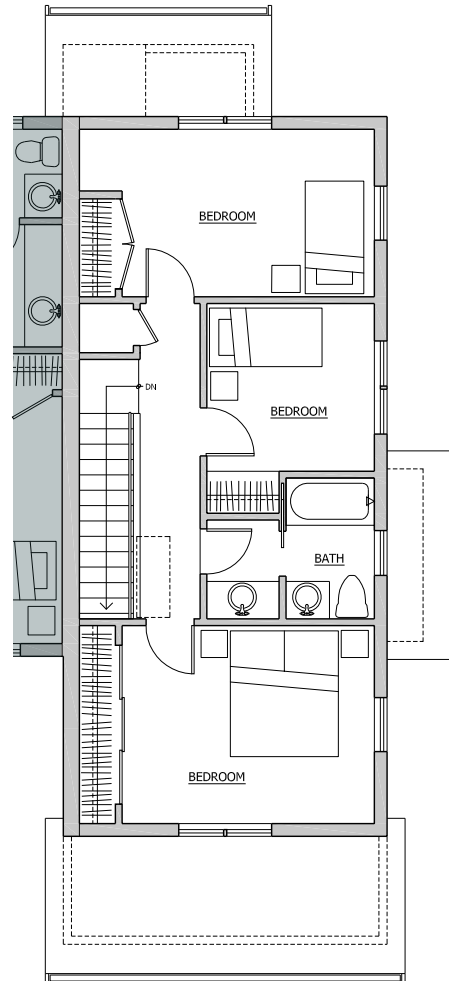


# HAZELNUT

1452 FT<sup>2</sup> . 3 BEDROOMS, 2 BATHROOMS



**FIRST FLOOR PLAN**  
745 FT<sup>2</sup>



**SECOND FLOOR PLAN**  
707 FT<sup>2</sup>

UNITS:

- 1
- 5
- 8
- 10
- 13

Hazelnut homes are designed for extreme garden lovers. Step from the front porch into the kitchen garden to gather decorative salad greens. A south-facing window seat may become a favorite place to read or watch birds. An upstairs family bath has a pocket door so more than one person can prep for the day at once. The first floor can be adapted to offer a bedroom, laundry/mud room, or extended 'great room'.

