

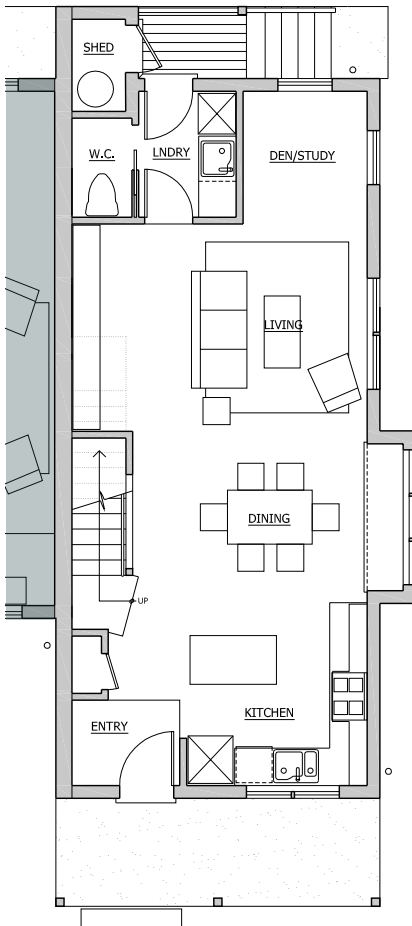
HAZELNUT

1452 FT². 3 BEDROOMS, 1.5 BATHROOMS

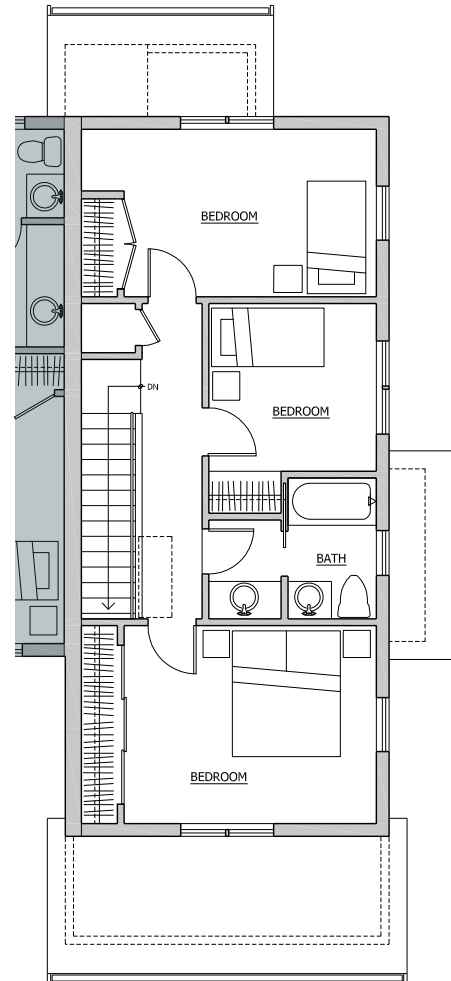
UNITS:

- 1 5 8 10 13

Hazelnut homes are designed for extreme garden lovers and people with feline tendencies. A sunny, south-facing window seat may become a favorite place to read, watch birds, or plan the next year's garden. Step from the front porch into the kitchen garden to gather herbs and decorative salad greens. An upstairs family bath is divided by a pocket door so more than one person can prep for the day at once.



FIRST FLOOR PLAN
772 FT²



SECOND FLOOR PLAN
763 FT²

